

# Beyond Borders and Binaries



UNIVERSITY OF  
TORONTO

Jasmine Ho

jasminee.ho@mail.utoronto.ca

## K-Pop's Impact on Gender, Sexuality, and LGBTQ+ Fans

### Introduction

The rise of K-pop has become a global phenomenon, influencing pop culture and challenging traditional narratives surrounding gender and sexuality. K-pop serves as a platform for representation and empowerment, offering acceptance and a sense of belonging beyond cultural boundaries. This research explores how the industry shapes and reflects contemporary perceptions of gender and sexuality, focusing on the experiences and perspectives of LGBTQ+ fans who find community and empowerment within K-pop's diverse landscape.



### Background

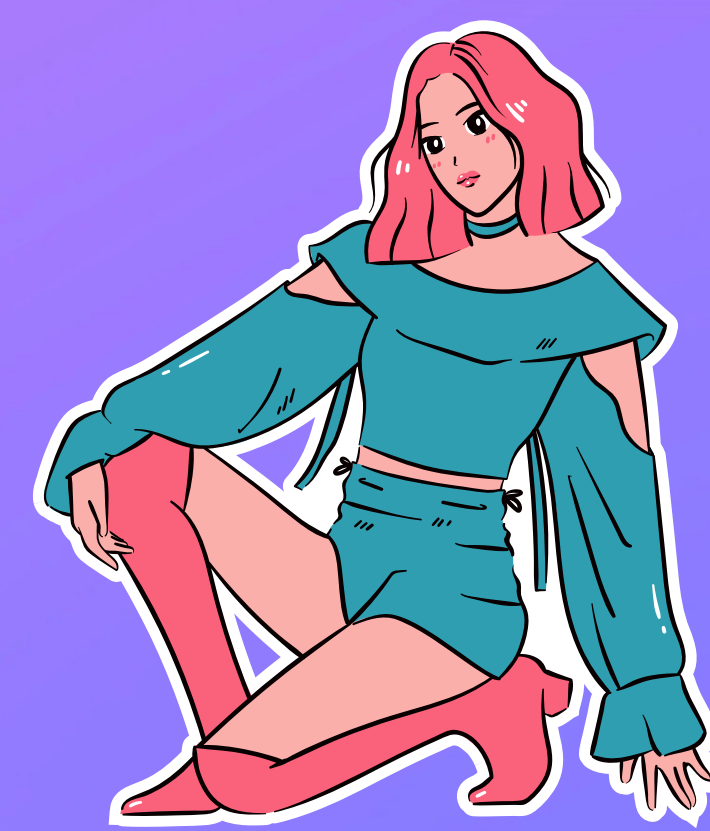
#### A Very LGBTQ+ Forward Conservative Cultural Product

Because of South Korea's conservative values regarding gender and sexuality, the K-pop industry doesn't openly advocate for LGBTQ+ acceptance, and idols who identify as LGBTQ+ may face penalties. However, global fans have interpreted non-cisgender and non-heterosexual identities within K-pop, fostering empowerment and recognition for LGBTQ+ individuals. The industry's strict control over idols, from their image to public interactions, makes it challenging for them to openly discuss LGBTQ+ issues due to potential backlash and societal norms. While some idols may subtly express support for the LGBTQ+ community, such expressions often remain indirect due to industry constraints.

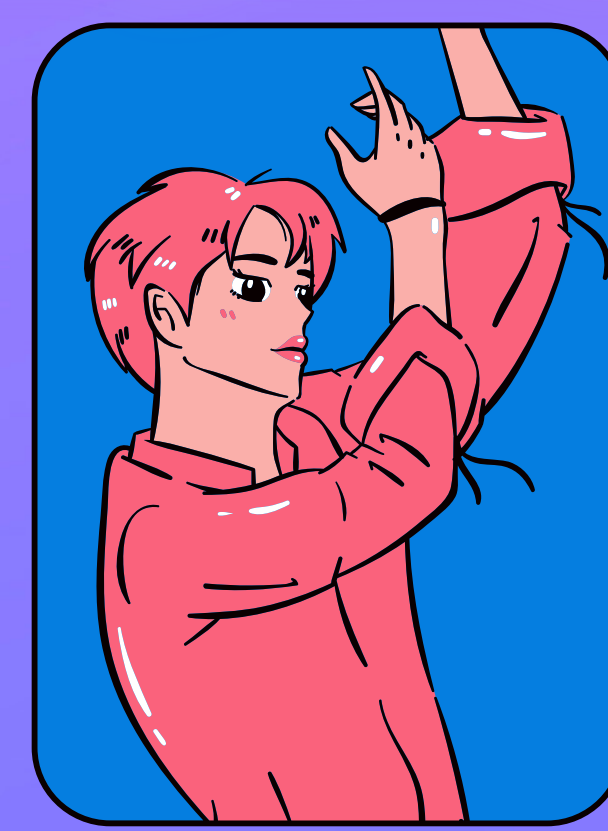


### Discussion

#### Fan interpretations of K-pop on gender and sexuality explore indirect representations of the LGBTQ+ community in K-pop idols and fan culture



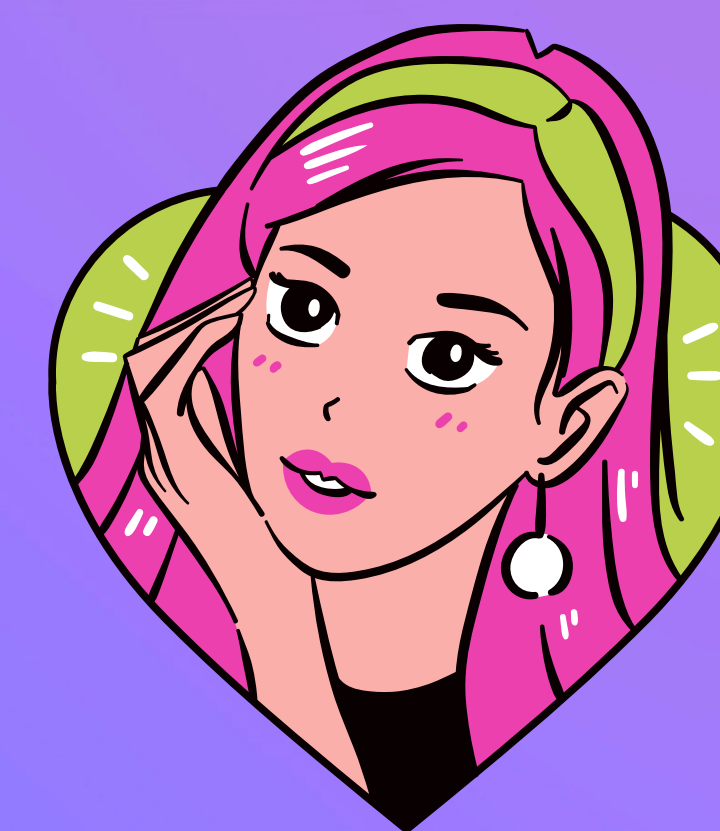
Fan labour, like cosplay and dance covers, create environments for safe gender and sexual identity exploration.



K-pop's depiction of non-sexual same-gender affection through "skinship" serves as normalization of non-heterosexual relationships.



K-pop idols' adoption of androgynous styles provides a vehicle to explore gender and sexual identity through clothing.



Social media platforms provide a global space where LGBTQ+ fans can express and celebrate their identities within the expansive realm of K-pop fan culture, fostering connections and solidarity.

### Conclusion

K-pop challenges traditional ideas about gender and sexuality, contrasting South Korea's conservative culture with its progressive ethos.

The dominant narrative of K-pop and its interpretations is controlled by the

# FANS

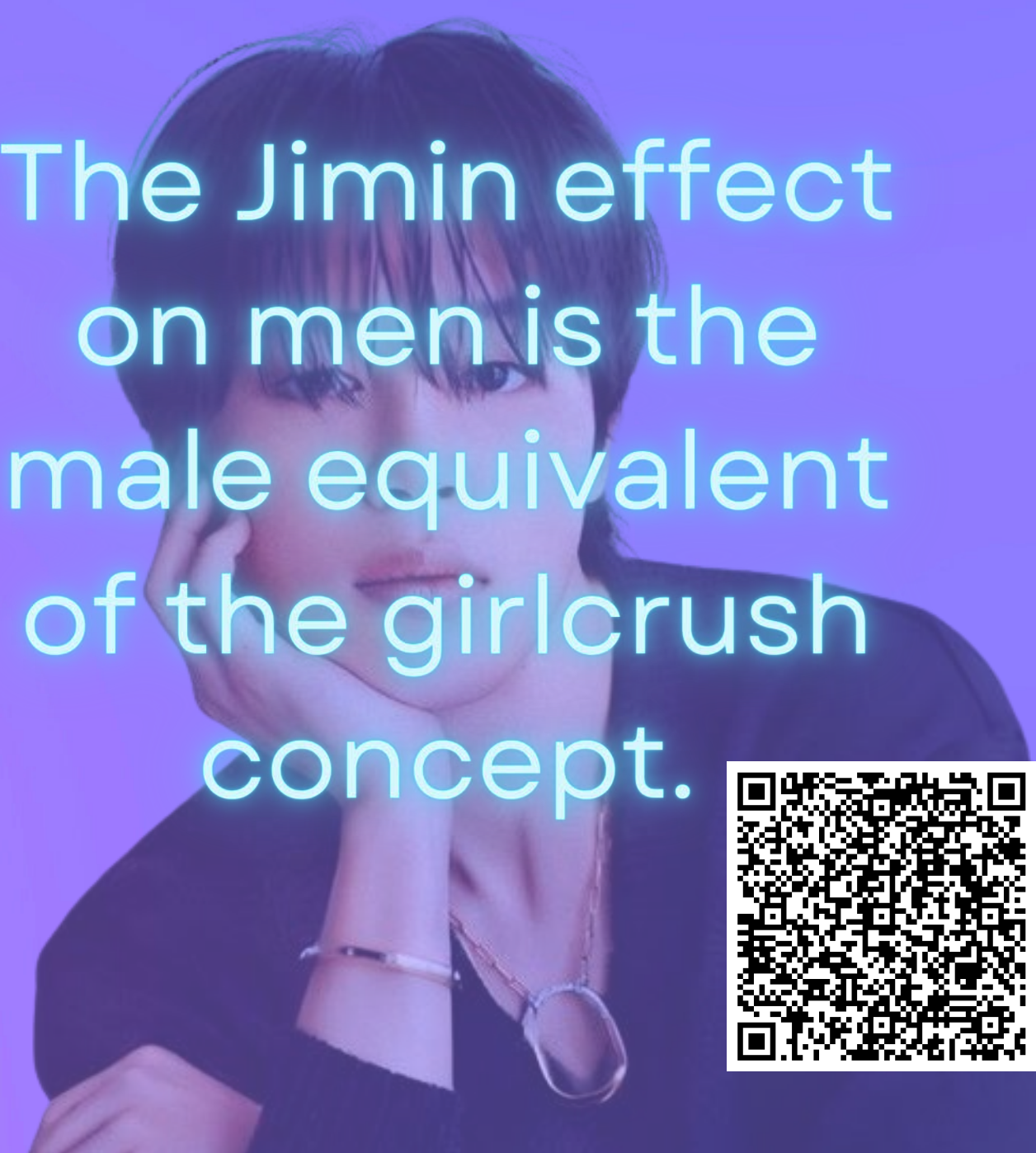
who majority lean towards liberal, accepting views of LGBTQ+ genders and sexualities.

This is only made possible through the modern idea of participatory culture, one where the consumer and the creator become more blurred.

### Case Study

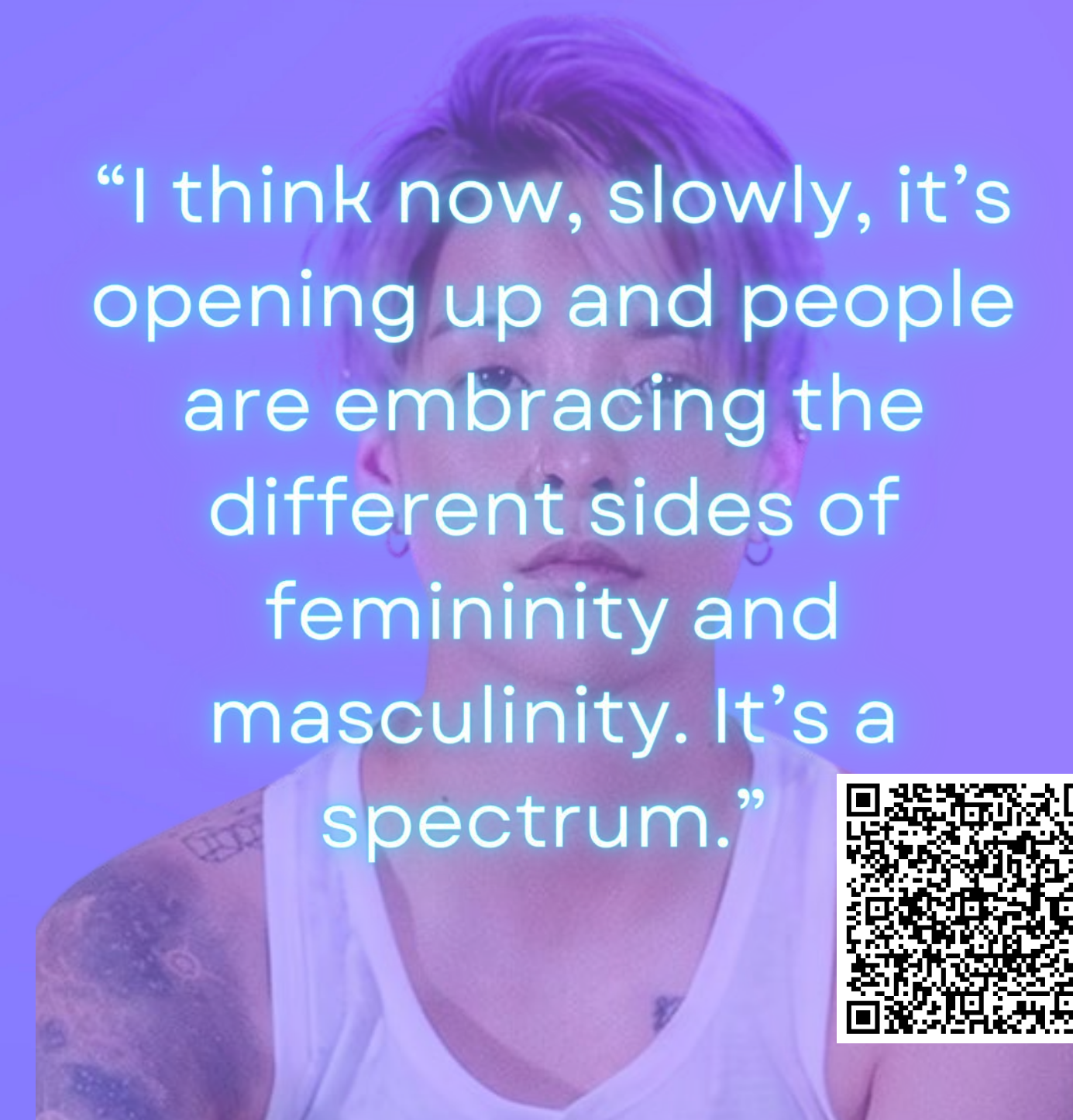
Jimin

The Jimin effect on men is the male equivalent of the girlcrush concept.



Amber Liu

"I think now, slowly, it's opening up and people are embracing the different sides of femininity and masculinity. It's a spectrum."



### Acknowledgements

I wish to express my sincere gratitude to Professor Jeri English for her invaluable support in fostering my confidence to share my work and for igniting my passion to delve deeper into the realm of gender studies. Her exceptional expertise has not only equipped me with the foundational knowledge but also empowered me to explore and address crucial topics within this field.